



hansen
products

Installation instructions for the Millennium door

1. Take out the door from the pallet.



Prepare the necessary tools and accessories:

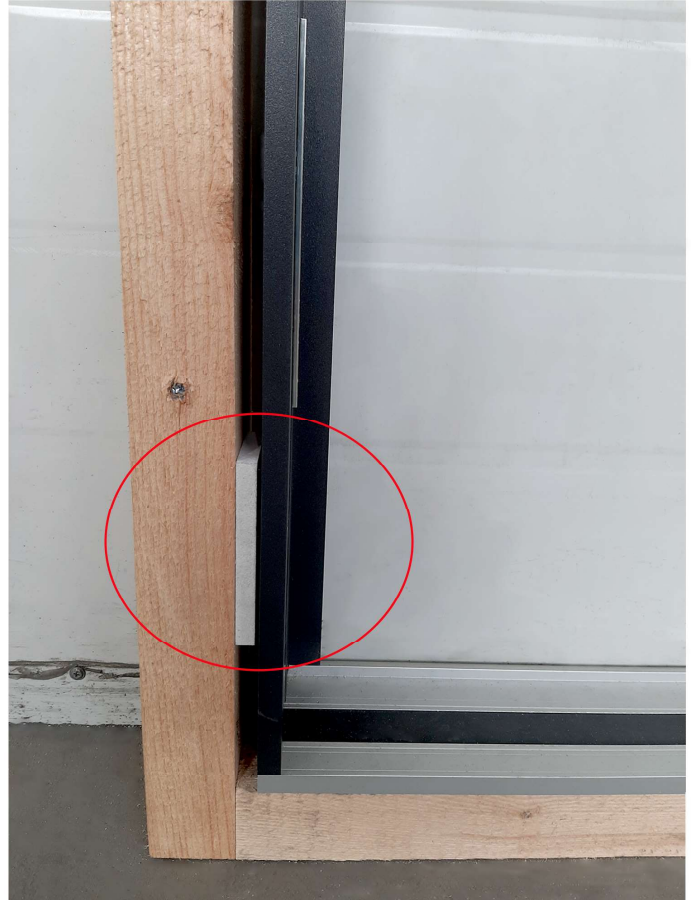


2. Frame installation:

2.1. Insert the door frame into the opening.

2.2. Support the door with, e.g., wedges, spacers mounting them in the in the place of assembly holes appearances.

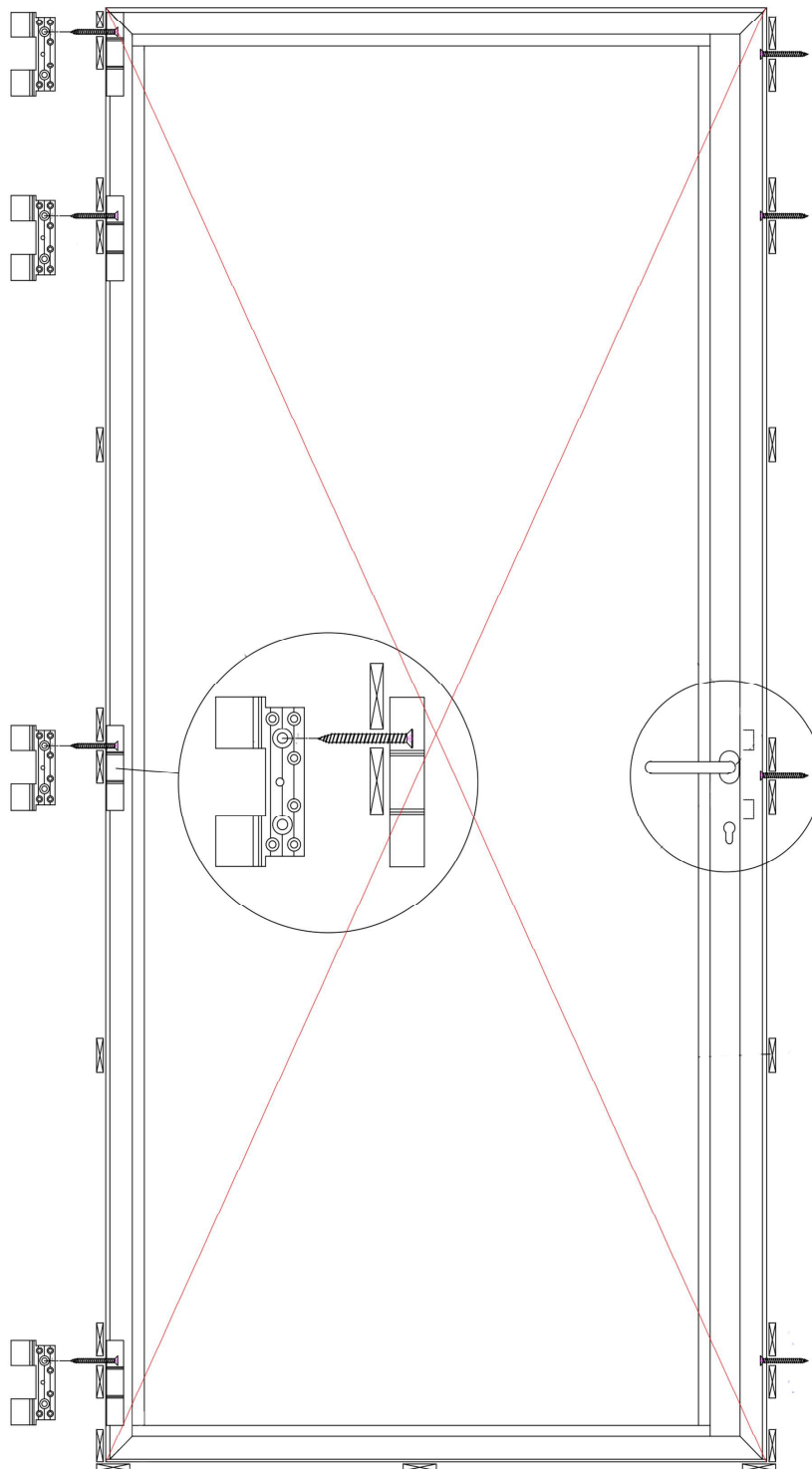
Position the frame so that it is stable and level in all directions and in all directions and adjust with wedges.



3.3. By using spirit level check the vertical and horizontal correctness.



3.4. Check whether the diagonals of the frame are the same - as they should be.



3.5. Drill mounting holes in the wall through the frame.

The number of mounting holes is consistent with the number of prepared holes in the frame.

The hinge side is installed first -it has to be leveled correctly and 100% vertical.

Installation holes are drilled through the door hinge.

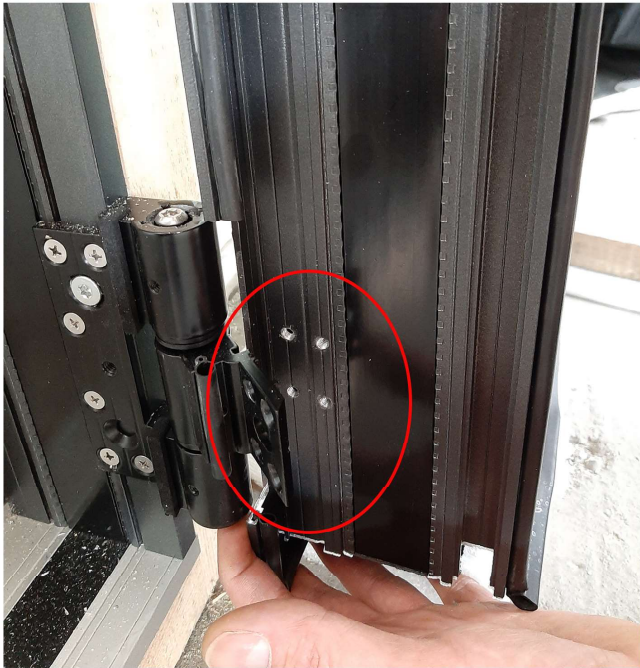


3.6. Install the mounting screws (the number of screws corresponds to the number of holes in the frame). Please install 2 mounting screws per hinge.



3.7. After mounting the frame to the wall on the hinge side, install the sash.

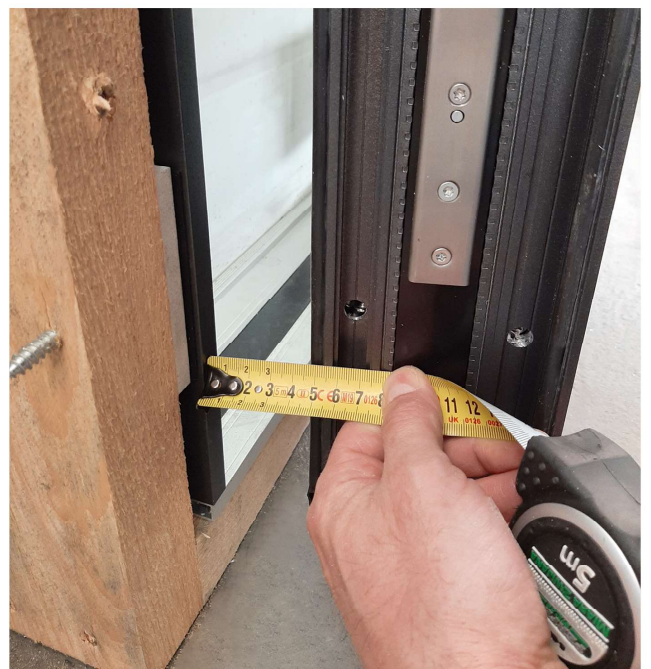
3.7.1. Open the hinges.



3.7.2. Mount the sash on the hinges.



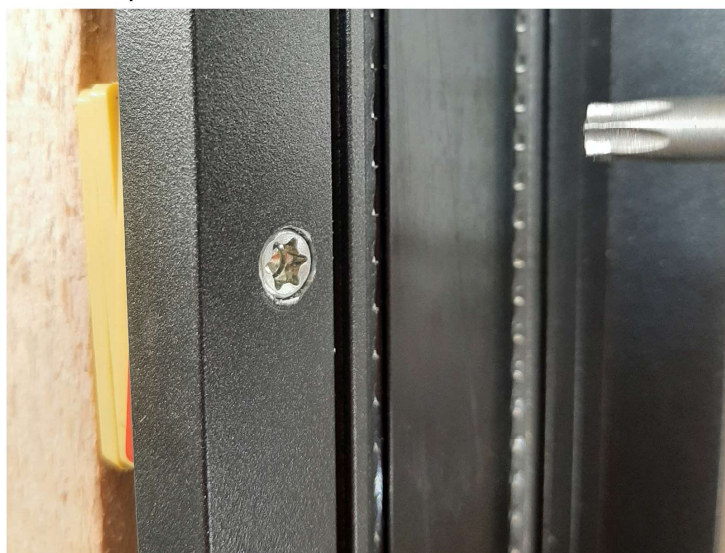
3.7.3. Close the door, but not fully, gap between the frame and the sash should be the same on top and on bottom.
If not, correct a position of frame.



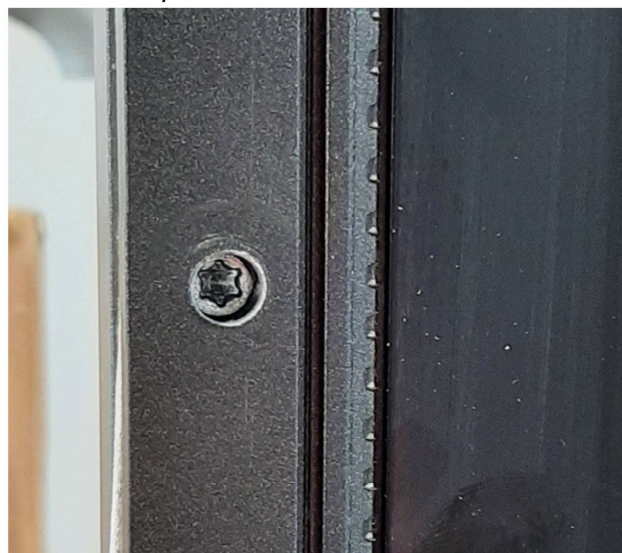
3.7.4. If the gap is correct, install the screws on the opposite side.



Correctly installed screw



Incorrectly installed screw



3.8 Check the frame dimensions.

If the frame has been overtightened, loosen the screw, add a washer, and tighten the screw.

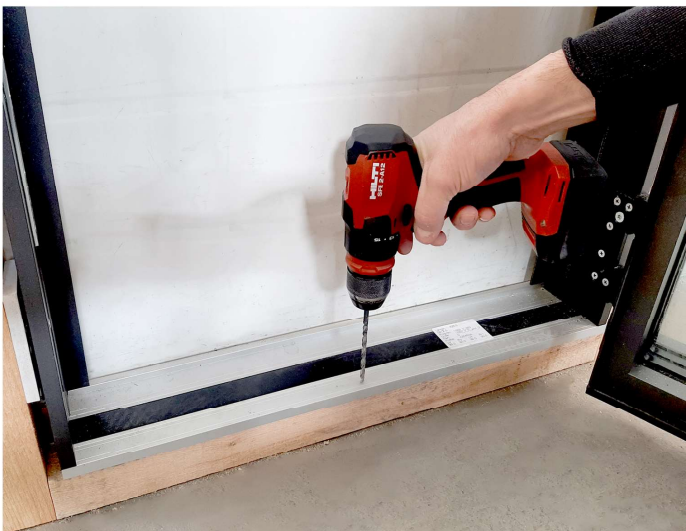


3.9. Install the plugs on the mounting holes.



4. Screw the threshold:

4.1. Drill a hole in the threshold.



4.2. Install the screw.

