



 **hansen products**

LARGE-DIMENSIONED SLIDING DOOR WITHOUT VISIBLE ALUMINIUM PROFILES





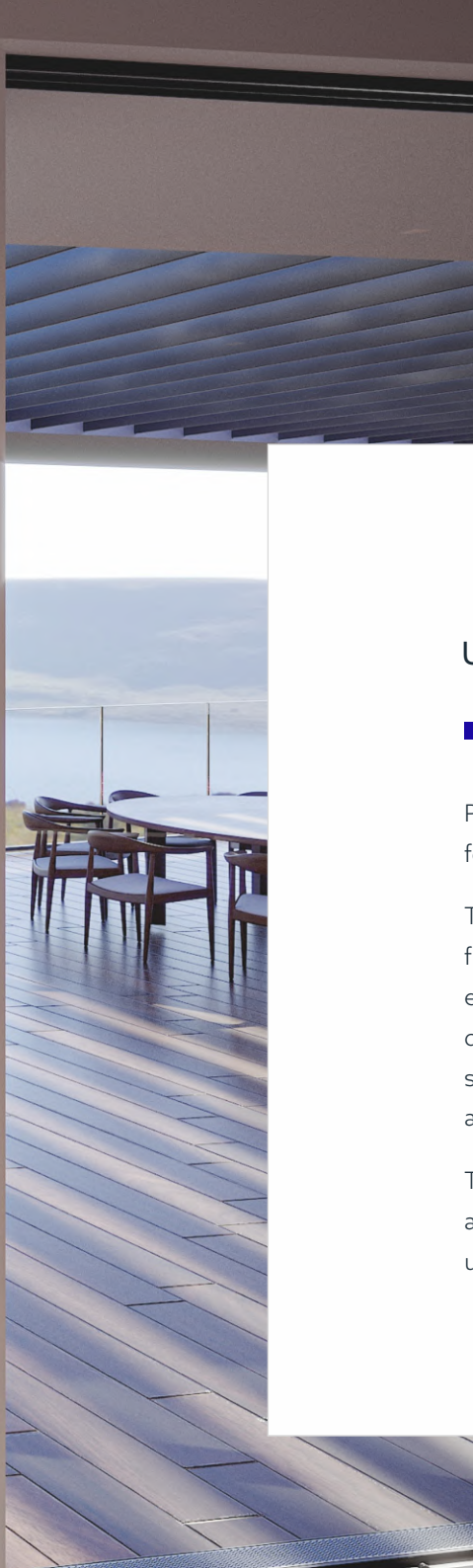












## UNLIMITED POSSIBILITIES TO DESIGN THE SPACE

Panoramic view of the surrounding, optically enlarged living space and the feeling of connection with nature are just few of many advantages of sliding doors designed on the basis of the Hansen Sliding system.

The state-of-the-art, minimalist design of this solution allows for hiding the aluminium frame of the structure in the floor, walls and the ceiling, thus the boundary between the house interior and the outside surrounding is blurred. This effect is enhanced by the threshold-free construction which facilitates moving. The Hansen Sliding system allows for designing glazings without aluminium elements being visible from outside. Thus, the effect of almost uniform glass surface is achieved with discrete division lines. What is more, the glass corner allows for connecting glass sheets at any angle.

The feeling of unlimited space is ensured by slightly visible width of the door leaf connection, the smallest size of visible aluminium available at the market as far as movable mullion is concerned, as well as permitted height of the structure up to 4 m. Despite of large size of designed solutions, the entire structure is light and subtle.



## COMFORT AND FUNCTIONALITY

- Unlimited access to sunlight – transparency up to 98%.
- Structures based on the Hansen Sliding system can have the height up to 4 m.
- The possibility of glazing with triple pane units up to 60 mm thick.
- Independent structures of the Hansen Sliding system can be connected at 90° angle.
- A static mullion allows for designing a row of fixed glazing which can be additionally connected at any angle thanks to using an all-glass corner.
- The solution for the smooth transition of the Hansen Sliding structure into the mullion and transom façade FA 50N and FA 50N SL.
- Manual or automatic control. The control mechanism is hidden or assembled at the outside of the construction.
- The possibility of glazing from the outside.
- Linear drainage integrated with the frame.
- The Hansen Sliding system allows for the replacement of worn guide rolls without the necessity to disassemble heavy door leaves.
- Patented solution of divided chicane profile ensuring easy assembly and the possibility of the fitting replacement without the necessity of the leaf disassembly.









## SLOTTED SOLUTION

A REVOLUTIONARY APPROACH TO THE THRESHOLD IN SLIDING DOOR CONSTRUCTION!

The bottom frame and carriage mechanism are recessed into the floor, making them completely invisible. The door user sees only an aesthetically appealing narrow gap of only 25 mm. The solution gives great scope for interior design through the freedom of choice of floor finish. The use of the same material inside and outside the building guarantees the effect of complete blurring of the border between spaces. The solution uses a thermally insulated I-section profile. The slotted construction provides excellent thermal insulation. It is available in all Hansen Sliding system variants and schemes.

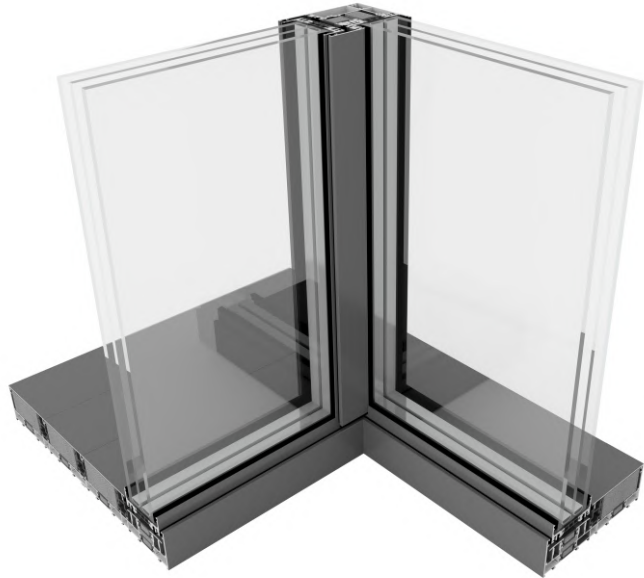
## FIXED GLAZING IN THE HANSEN SLIDING STYLE

THE HANSEN SLIDING SYSTEM HAS BEEN ENRICHED WITH A NEW SOLUTION WHICH MAKES IT POSSIBLE TO DESIGN FIXED GLAZING

Single frame, which was used up till now, has been modernized by adding a detachable fin facilitating the installation of a glazed units. This procedure allows us to manufacture single-sash fixed windows and corners composed of two fixed elements. The solution is compatible with standard frames without separated fins, which is especially important in structures broken multiple times at various angles.







## ASYMMETRICAL CORNERS

UNLIMITED POSSIBILITIES FOR DOOR FRAMES CONFIGURATION



The new Hansen Sliding solution allows different frames to be joined freely and systemically at 90°. This makes it possible to construct fixed and sliding corners with an unequal number of sections on both arms. Joining a single door frame with a double door frame, a double door frame with a triple door frame or multiple door frames, e.g. a four door frame with a double door frame, is no problem at all. The main advantage of the solution is that there is no need for deep fitting where the design does not require it. The depth is perfectly matched to the requirements of the corner construction scheme. In addition, if there is absolutely no need, we do not use deep frames, which reduces costs.

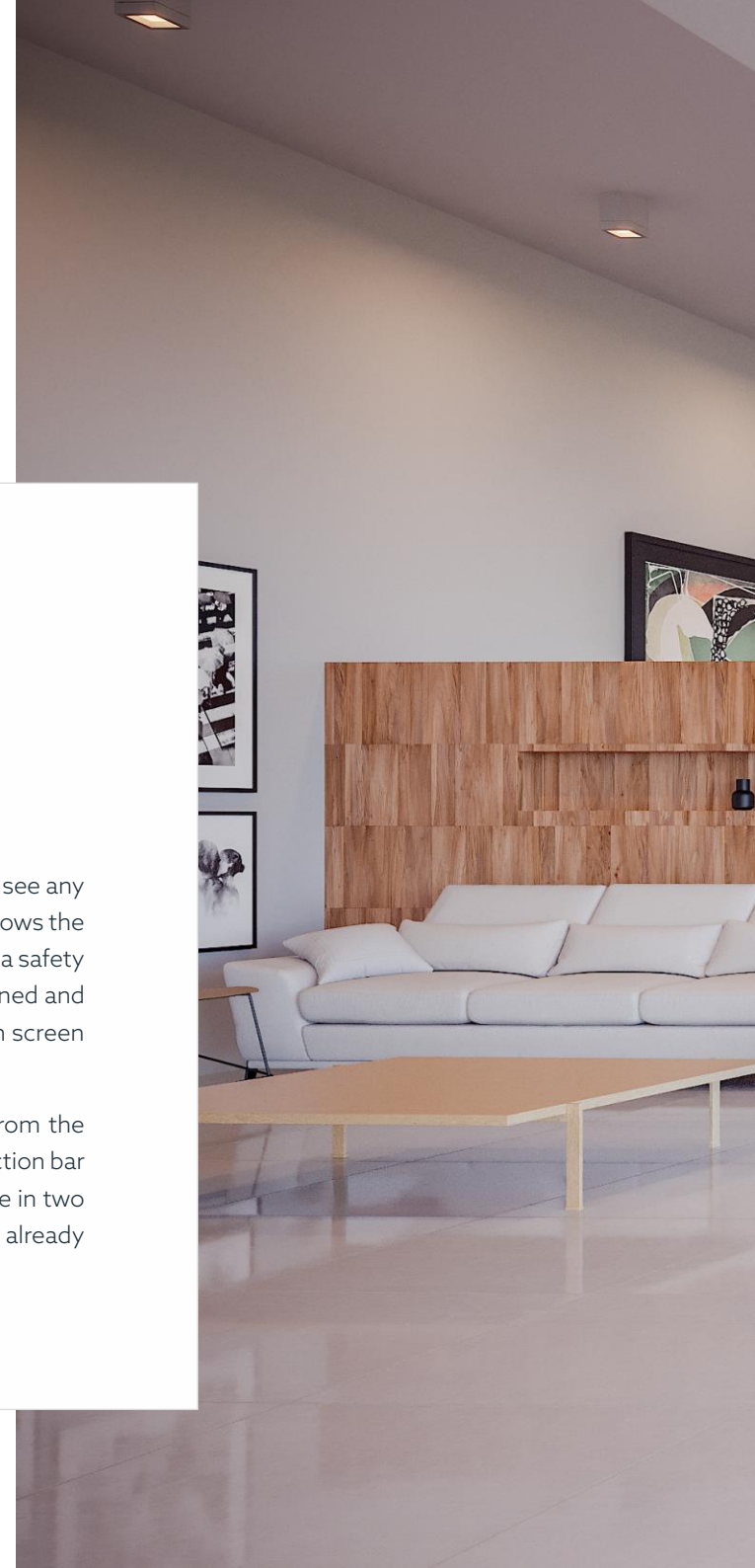




## AUTOMATION OF THE HANSEN SLIDING CONTROL PROCESS

Within the Hansen Sliding system, two solutions are available for automating the leaf sliding process:

- **The PREMIUM solution.** The automatics is completely hidden in the Hansen Sliding frame, so the user does not see any structural element. With this automatic system the maximum weight of a moving leaf is 1200 kg. The solution allows the control of leaves in virtually all configurations including corners and multi-leaf arrangements. The automation has a safety function including an overload system that stops the leaf on an obstacle and ensures that the pane can be opened and closed in the event of a temporary power failure. The solution can be controlled by, e.g., remote control, touch screen panel or android.
- **A surface-mounted solution** in which the automation bar is attached to the Hansen Sliding top door frame from the inside. Nevertheless, the solution is characterised by elegance and minimalism. The user sees only a small inspection bar for service access. The maximum weight of the moving leaf is 700 kg. The surface-mounted solution is available in two variants: automatic sliding of one leaf or two leaves that slide sideways. It is possible to install the automation on an already installed Hansen Sliding structure.













## TECHNICAL PARAMETERS

Thermal insulation EN 10077-2	Uw from 0,7 W/m <sup>2</sup> K
Acoustic insulation EN ISO 140-3	Rw = 42 dB
Air permeability EN 12207	Class 4
Water tightness EN 12208	Class 8A
Wind load resistance EN 12210	Class C4
Anti-theft protection EN 1627	RC2

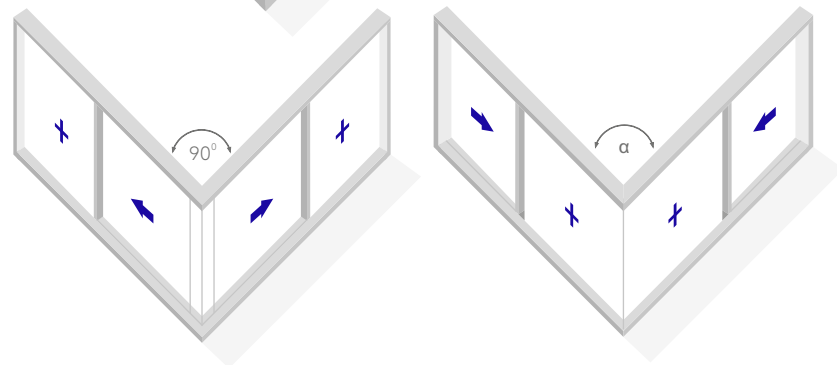
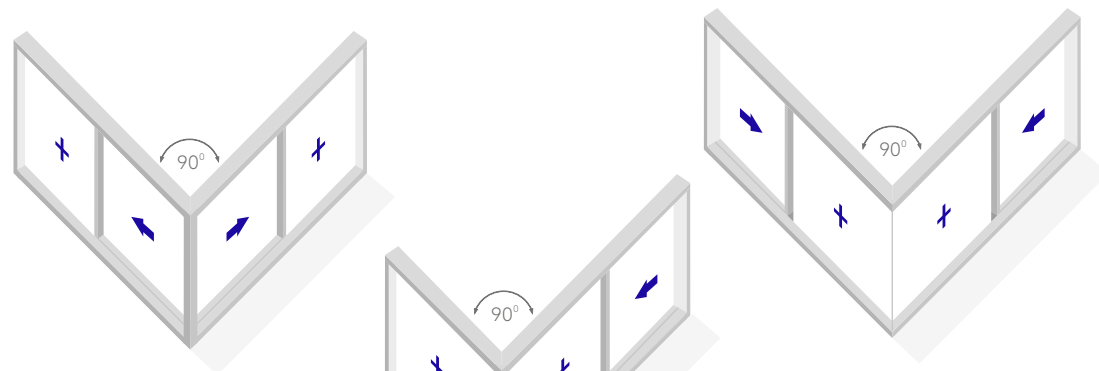
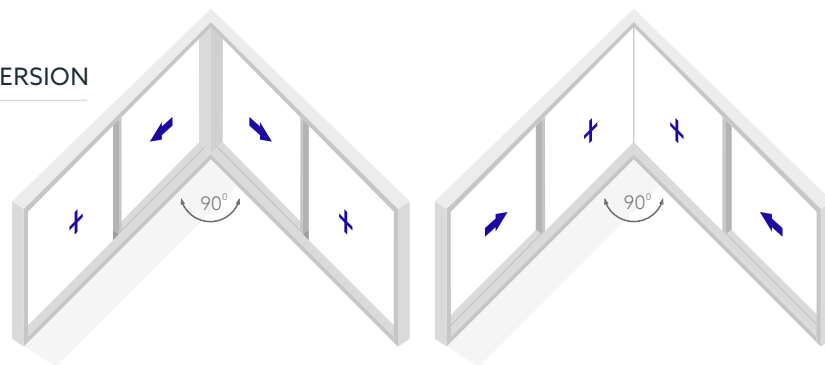
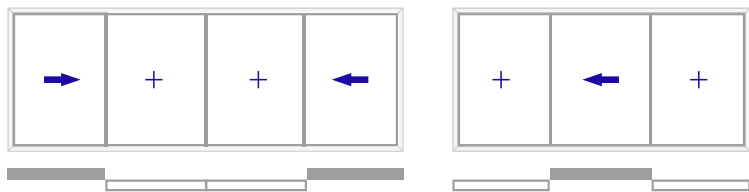
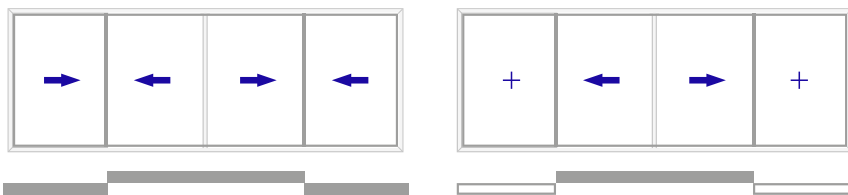
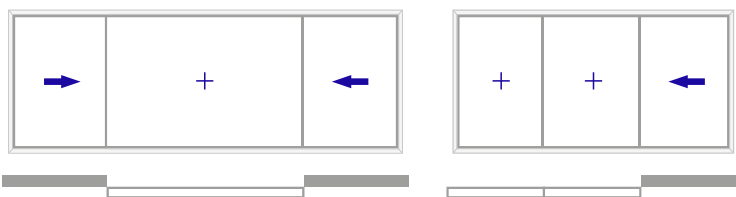
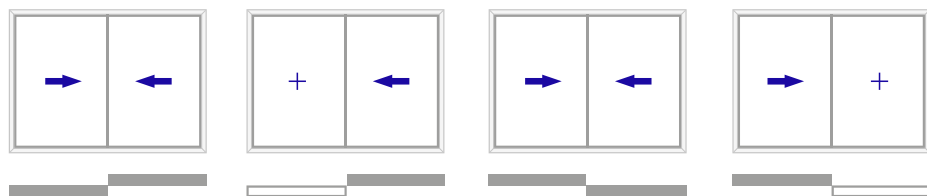
## TECHNICAL PARAMETERS

Frame structural depth	90 mm, 192 mm, 294 mm
Leaf structural depth	72 mm
Infill thickness	31 ÷ 36 mm and 50 ÷ 60 mm
Maximum dimensions L x H	leaf 4000 x 4000 mm
Maximum weight of manual leaf	400 kg
Maximum weight of automatic leaf	1200 kg
Maximum weight of fixed part	1200 kg
Structure type / leaves diagram	Diagrams: A, C, D, F, G, K, Galendage, 90° corners



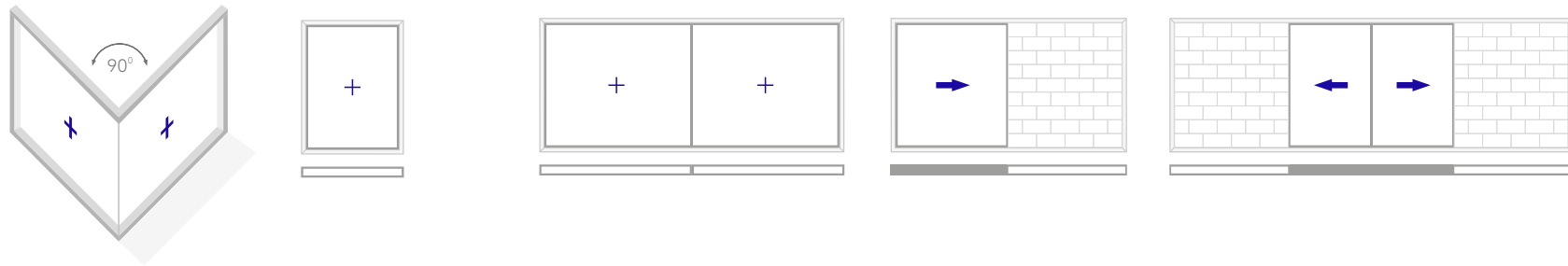


CONSTRUCTION POSSIBILITIES OF THE HANSEN SLIDING SYSTEM IN A DOUBLE-RAIL VERSION

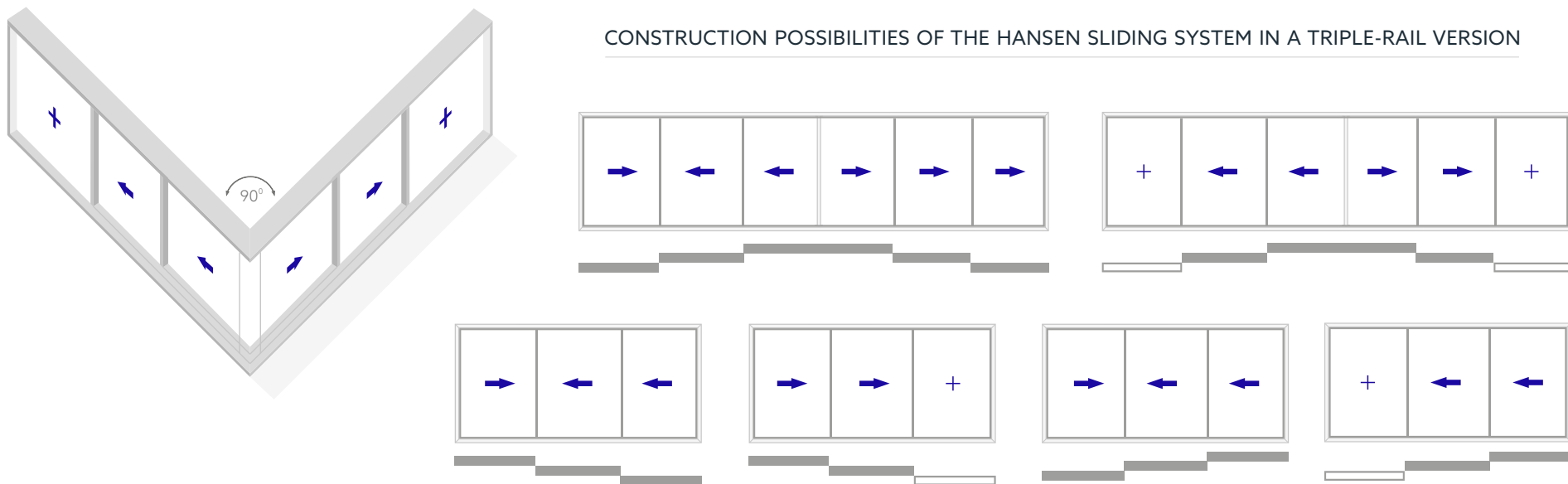




### CONSTRUCTION POSSIBILITIES OF THE HANSEN SLIDING SYSTEM IN A SINGLE-RAIL VERSION



### CONSTRUCTION POSSIBILITIES OF THE HANSEN SLIDING SYSTEM IN A TRIPLE-RAIL VERSION

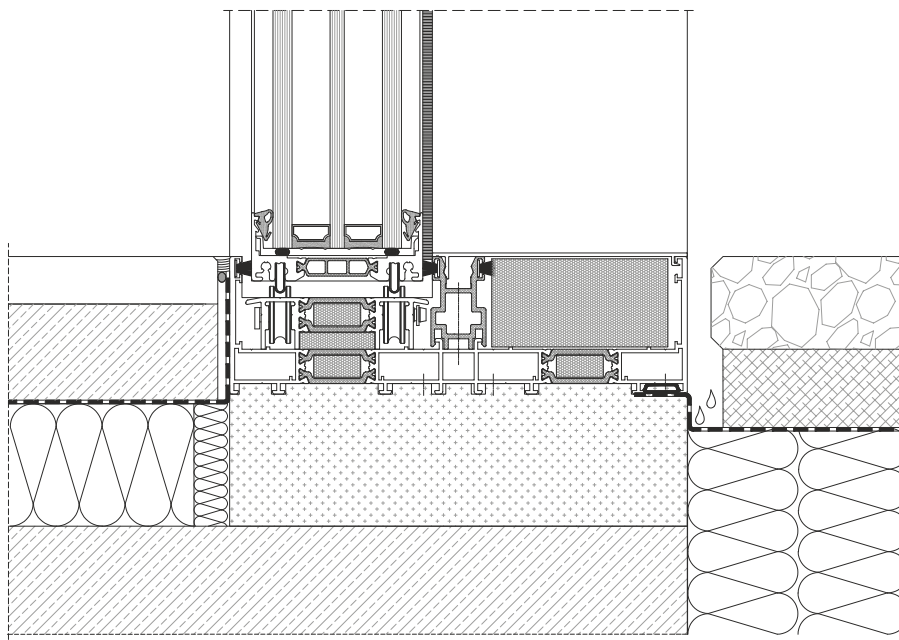




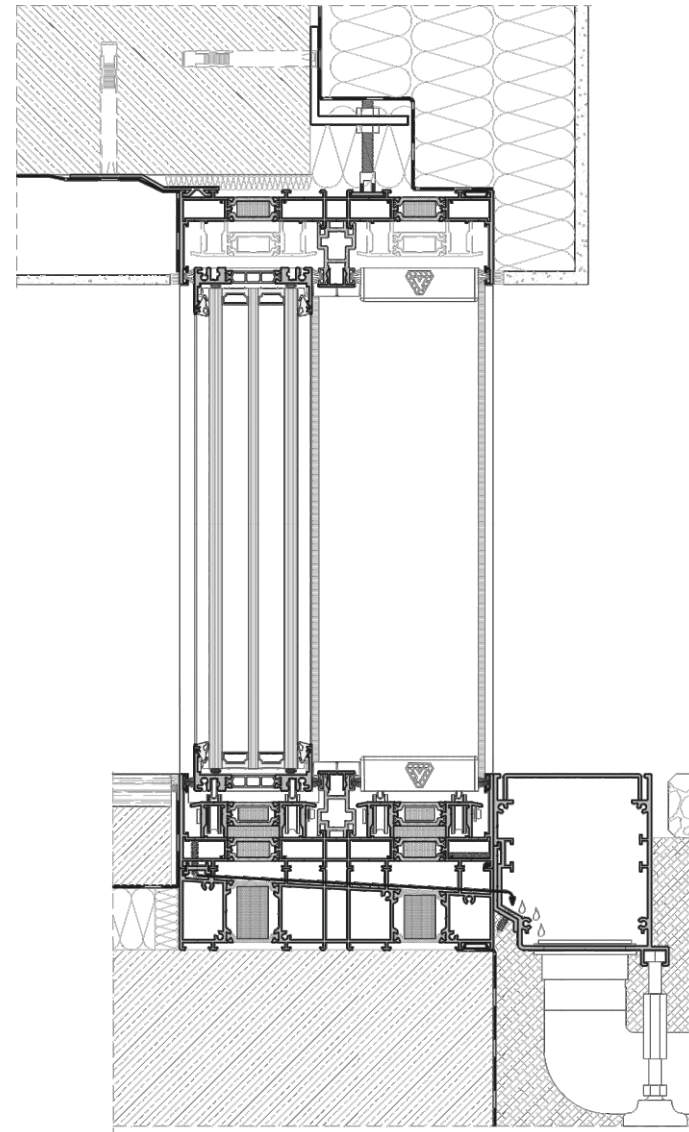


## THE HANSEN SLIDING SYSTEM CROSS-SECTIONS

The door cross-section at the floor level

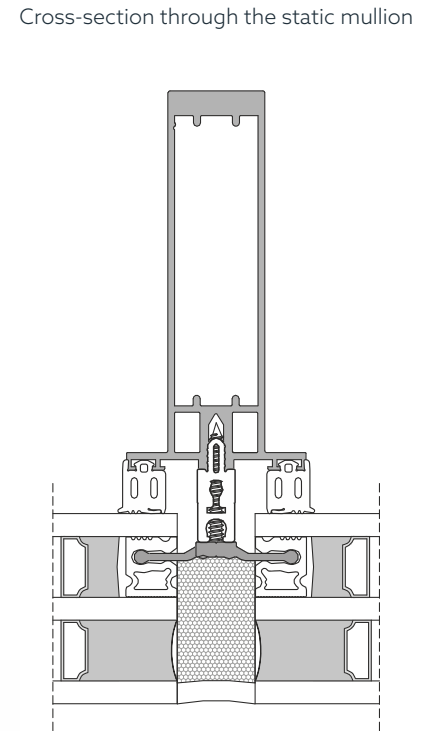
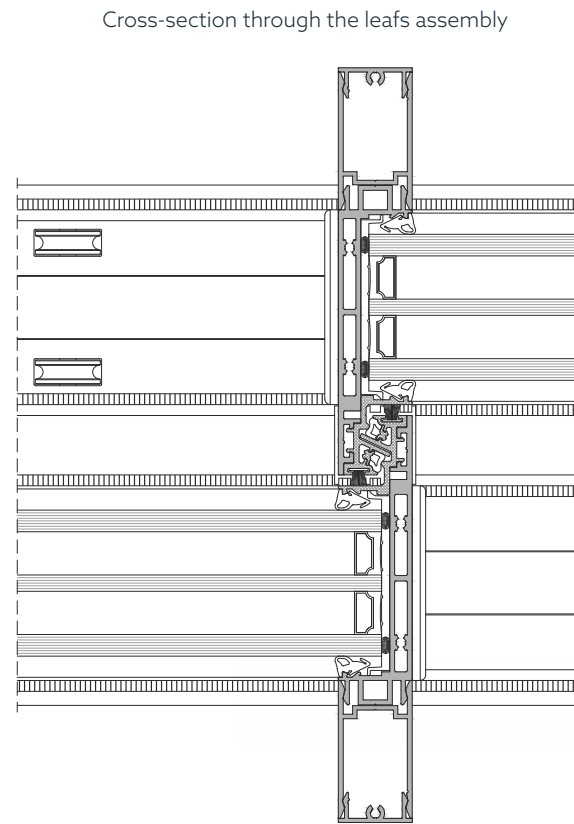
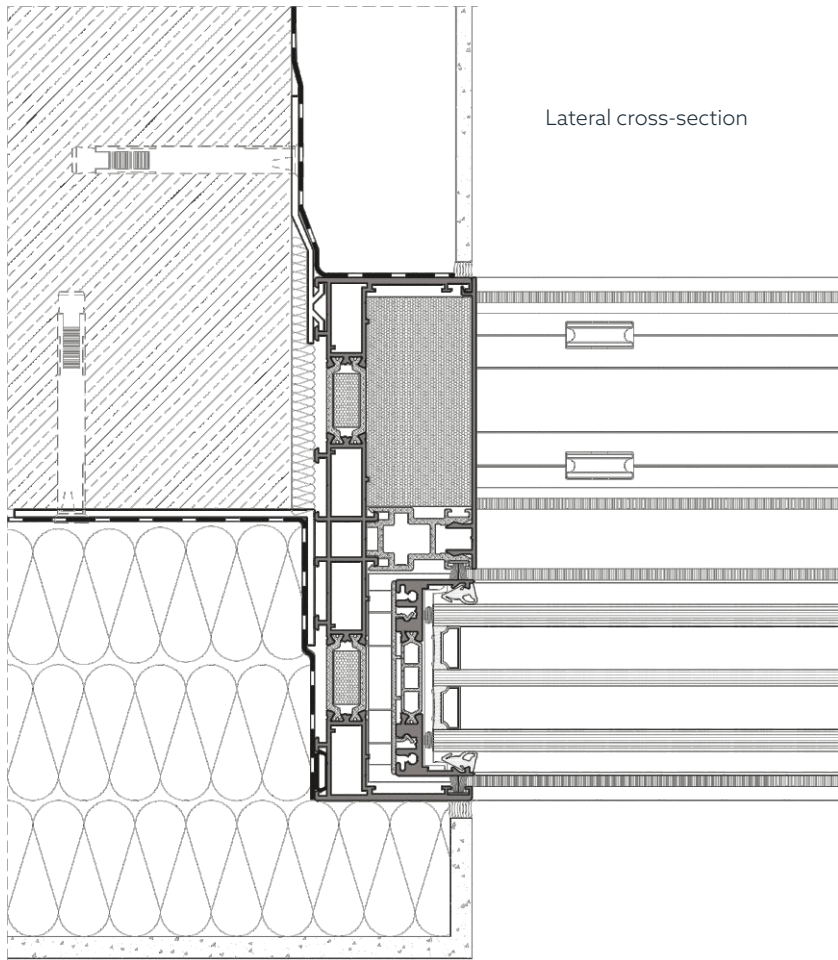


Cross-section through the door





THE HANSEN SLIDING SYSTEM CROSS-SECTIONS















**hansen**  
products

**W:** [hansen-products.com](https://hansen-products.com)

**E:** [offer@hansen-products.com](mailto:offer@hansen-products.com)